

Infection Prevention & Control: Mattress Checking Procedure



Purpose of this procedure:

- This document sets out how, who and when mattress checking and cleaning should be carried out in NHS Lothian in-patient areas, operating departments, outpatient departments and emergency departments
- This will minimise the potential risk to patients of cross infection from damaged or contaminated mattresses. Contaminated mattresses have been highlighted as source or contributory factors in outbreaks of infection in research and national policy.
- A national hazard alert notice was circulated in 2010 highlighting the need to introduce a regular system of checking mattresses.

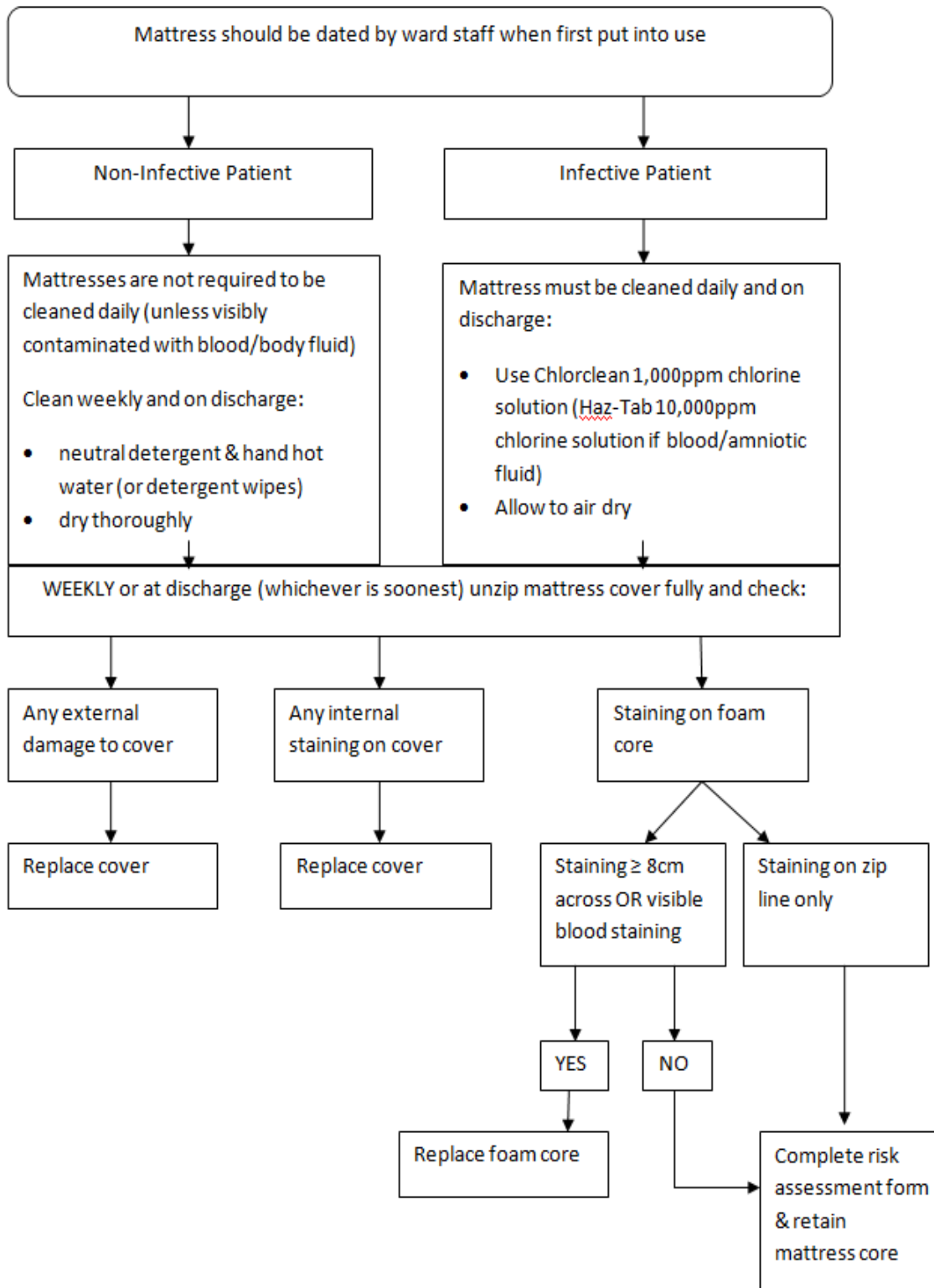
The Healthcare Environment Inspectorate (HEI) assesses NHS Lothian compliance with this as part of hospital inspections. Damaged and contaminated mattresses have been found during these inspections.

Roles and Responsibilities:

Nursing staff will:	<ul style="list-style-type: none">• Clean mattresses in line with this SOP• Check all patient mattresses on discharge or weekly (whichever comes first)• Remove contaminated or damaged mattress covers and cores from use• Complete all documentation relating to mattress cleaning and checks• Escalate through their line management if replacement mattress cover and/or cores are not available
Portering services will:	<ul style="list-style-type: none">• Uplift any soiled/damaged mattresses from ward areas for disposal• Delivery of new mattress cores to ward area
Tissue viability services will:	<ul style="list-style-type: none">• Provide guidance on the correct selection & use of pressure relieving equipment
Huntleigh Nurse Advisor will:	<ul style="list-style-type: none">• Provide support & advice on the safe and appropriate use of Huntleigh beds as per contract
Infection Prevention & Control Nurses will:	<ul style="list-style-type: none">• Support clinical staff to understand and implement this SOP• Monitor compliance with this SOP as part of ward visits and audit activity

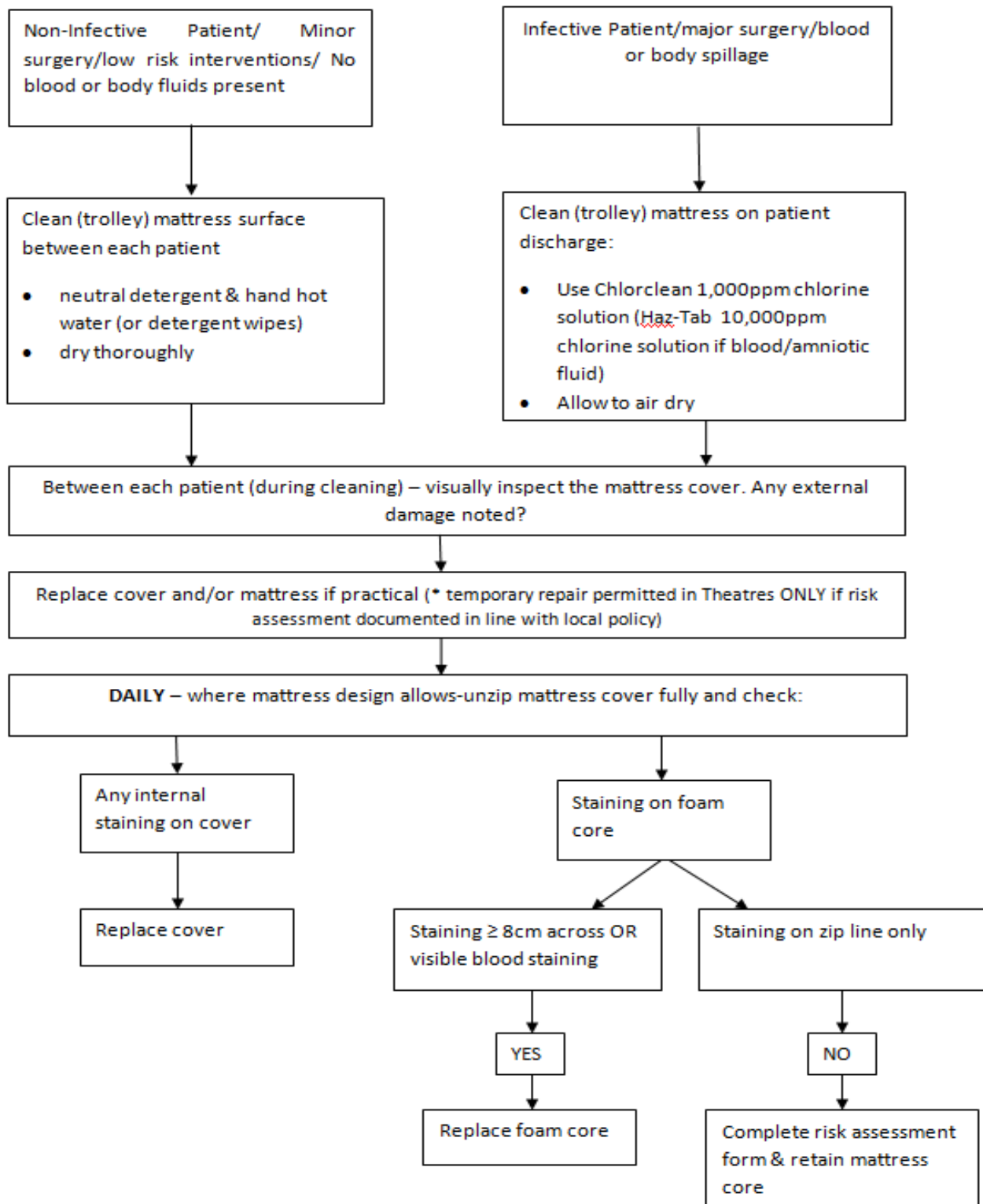
Infection Prevention & Control: Mattress Checking Procedure

Cleaning & checking procedure: In-patient areas



Infection Prevention & Control: Mattress Checking Procedure

Cleaning & checking procedure: Operating Theatres and Outpatient departments



Infection Prevention & Control: Mattress Checking Procedure



Associated materials/references: Mattress Contamination- Risk assessment form

Ward:		Bed space:	
Issue	Action	Action completed (date)	
Cover damaged (no replacement available)	<ul style="list-style-type: none"> • Mattress to be used to maintain delivery of safe care and patient flow • Escalate to site coordinator • Replace as soon as cover becomes available 	•	•
Mattress integrity damaged (no replacement available)	<ul style="list-style-type: none"> • Mattress to be used to maintain delivery of safe care and patient flow • Escalate to site coordinator • Replace as soon as cover becomes available 	•	•
Staining of mattress core is localised to zip line and/or minor ingress <8cm	<ul style="list-style-type: none"> • Retain mattress and reassess at patient discharge/within 1 week (whichever falls first) 	•	
Mattress core condemned (no replacement available)	<ul style="list-style-type: none"> • Mattress to be used to maintain delivery of safe care and patient flow • Escalate to site coordinator • Replace as soon as cover becomes available 	•	•
Replacement mattress available from store: (Yes/No)			
Signature:			
Date:			